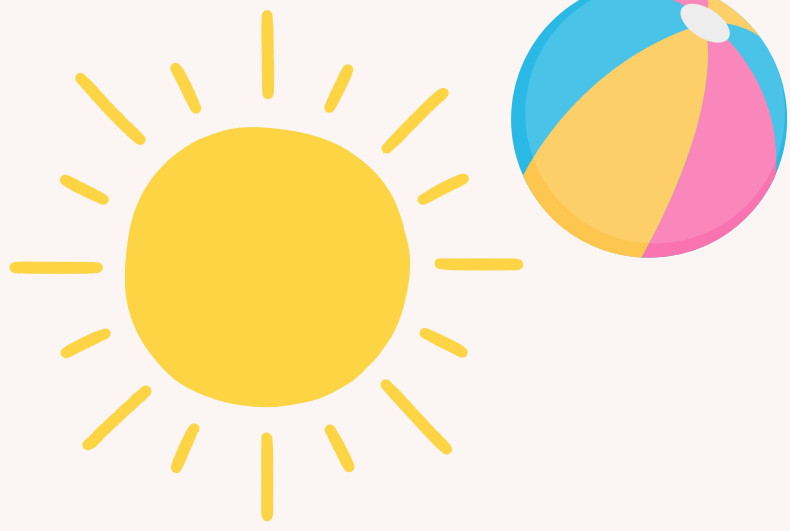




ST MARTIN'S
SCHOOL



EYFS Term 6



WHINLESS DOWN
ACADEMY TRUST

Nurturing Nature!

This term your child will be learning to...

Expressive Art and Design

Sing and perform a range of songs using props and resources. Safely use and explore a variety of materials, tools and techniques. Draw with increasing complexity.

Literacy and Drawing Club

Use their phonic knowledge to write simple sentences and phrases, which can be read by others. In some cases, use "and" to extend sentences. Read simple words and sentences using their phonic knowledge.

Important News and Dates this term:

Summer Fair and Picnic - Friday 5th June PM

Read Alongside Afternoon Tea - Friday 12th June

Sports Day - Monday 15th June 1.30pm

Trip to Walmer Castle - Tuesday 16th June

Drawing Club

Handa's Noisy Night
Pingu
Three Billy Goats
Gruff
Martha Maps it
out
Oliver's Vegetables

Maths

Begin to share and group objects up to 10. Explore and make patterns. Make connections between things they have learnt.

Understanding the World & RE.

Begin to compare life in England and beyond. Know that there are different countries in the world and talk about the differences they have experienced. Talk about what is special in our world.