



Newsletter

8th March 2024



Diary Dates:

March

Monday 11th until Sunday 11th March: The Big Plastic Count



Monday 11th: Year 1 phonics talk and animal collage with parents 2:00pm

Monday 11th: NELFT Online workshop (Understanding Your Child's Behaviour) 10:30am

Wednesday 13th: Support group for SEN carers/parents (at Whitfield Aspen Unit)

Friday 15th: Year R vision and hearing testing

Friday 15th: Red Nose Day ● ● ●

Thursday 21st: Year 6 trip to Dover Castle

Thursday 21st: Year 3 class assembly 9:00am

Monday 25th: Year 2 class trip to Frampton Farm

Monday 25th: NELFT Online workshop (Me and My Child: Understanding Resilience) 5:30pm

Tuesday 26th: Years 5 & 6 'Bold As' event at Duke of York's Nye Hall from 7:00pm

Tuesday 26th: Year R walk to the Co-Op

Wednesday 27th: Year R Stay and Play 2pm

Thursday 28th: Year 5 trip to Dover Castle

Thursday 28th: Last day of Term 4

April

Monday 15th: First day of Term 5

Friday 19th: Year 3 Living History Workshop

May

Monday 6th: Bank Holiday

Thursday 9th: Year 2 class assembly 9:00am

Monday 13th: SATs Week for KS2

Thursday 23rd: Year R class trip to the theatre

Amazing Attendance!

The classes with the best attendance this week was...

Broadstairs and Walmer Class!!
With 99.3%!

EASTER HOLIDAY

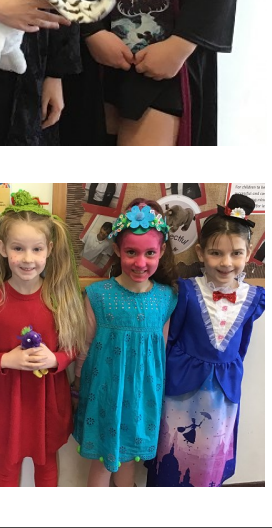
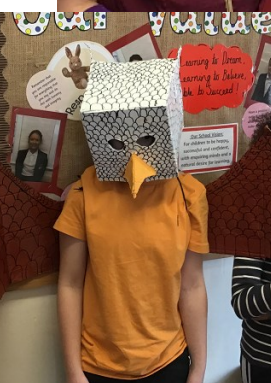
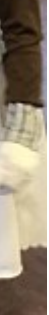
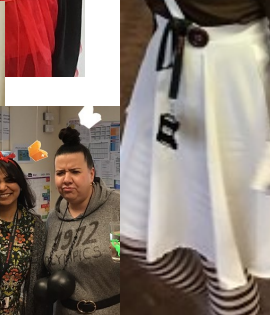
Priory Fields are hosting half term clubs. Space is extremely limited and is now available to book via the School Gateway App on a first com, first served basis.

If the club you would like to book is full, please let the school office know your interest as it may be possible to arrange additional spaces.



Learning to Dream, Learning to Believe, Able to Succeed!

CELEBRATING WITH
WORLD
BOOK
DAY





We have had such fun celebrating World Book Day 2024. The children (and staff) looked fabulous in their costumes on Thursday. We also loved having parents in school this morning to enjoy our 'Read Alongside' Breakfast—we hope you enjoyed it too!



Online Parent Workshops

Aimed at parents of children in primary school

Understanding Your Child's Behaviour

Monday 11th March 10.30-12.30pm

Kent Emotional Wellbeing Teams
Medway Emotional Support Teams

Online Parent Workshops

Aimed at parents of children in primary school

Me and My Child: Understanding Resilience

Monday 25th March 5.30-7.30pm

*Workshop timings change from term to term



PARENT/CARERS COFFEE GROUP

Wednesday 13 March 2024
12.15-2.15pm

A support group for parents/carers of children with SEN is now being run by Cloe Atkins- Specialist Support Worker- Dover Specialist Teaching & Learning Service (STLS).

Contact Sophie Hammond to book your place:
aspensmile@whitfield.kent.sch.uk

Tel: 01304 829846



Original posters with links can be found on our Website Calendar and on Facebook.